

FUJITEC

INSTRUCTION MANUAL

Electric Screwdriver
MO-1330 MO-1350

Controller
DO-1390A CO-1390A-2



Thank you very much for your purchasing. Electric Screwdriver (MO-1330, MO-1350,DO-1390A,DO-1390A-2). Please study this instruction manual for the correct use of the unit and preserve it so that you may refer to it when you come across anything unfamiliar.

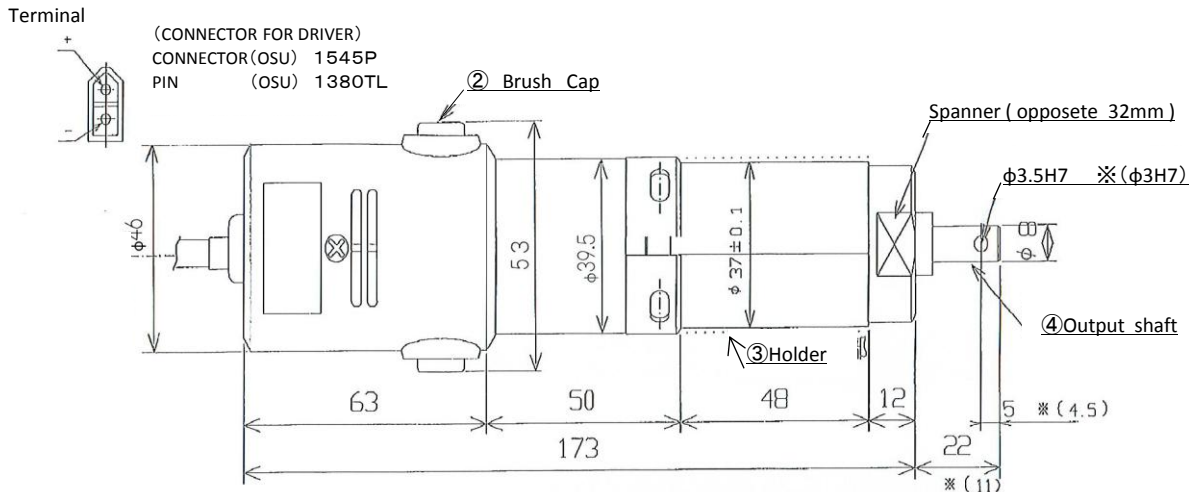
- CONTENTS -

1. Parts Identification	-----	P1
1 Screwdriver unit (MO-1330,MO-1350A)	-----	P1
2 Controller (DO-1390A)	-----	P2
3 Controller (DO-1390A-2)	-----	P3
2. Precautions for Use	-----	P4
3. Preparation	-----	P4
【How to install】	-----	P4
【How to connect】	-----	P4
4. Operation	-----	P5
【Inspection before operation start check if that】	-----	P5
【Trial operation】	-----	P5
【Operation】	-----	P5
【Stop】	-----	P5
5. Maintenance	-----	P6
【Daily maintenance】	-----	P6
【Monthly maintenance】	-----	P6
【Adjustment】	-----	P7
【Consumable parts replacement】	-----	P7
6. Motion Timing Chart	-----	P8
7. Troubleshooting	-----	P8
8. Specifications	-----	P9
9. DO-1390A 1-Phase,2-Phase Torque-changing Controller	-	P10
1 Adjustment for torque	-----	P10
2 Changing Torque Wiring Diagram	-----	P10
3 Motion Timing Chart	-----	P11
4 Note	-----	P11
10. Service	-----	P11
11. Appendix	-----	P12

1. Parts Identification

1 Screwdriver unit (MO-1330, MO-1350A)

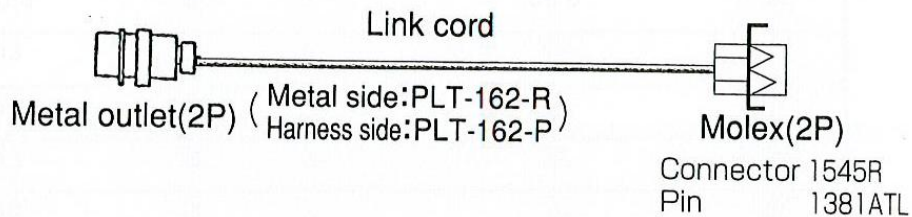
Note) ※ () The size is applied to special type MO-1330.



※Output axis φ6
 Specification

① Driver cord (standard 3.5m)

910060250



① Screwdriver cord 910060250 (optional)

Transmits input / output signals.

driver side : surgical knife connector 1545R / surgical knife pin 1381TR

controller side : metal outlet 2P PLT-162-R (panel side : PLT-162-P)

② Brush cap

Fixes and protects brush. If turned clockwise, brush cap tightens; if turned counterclockwise, it loosens.

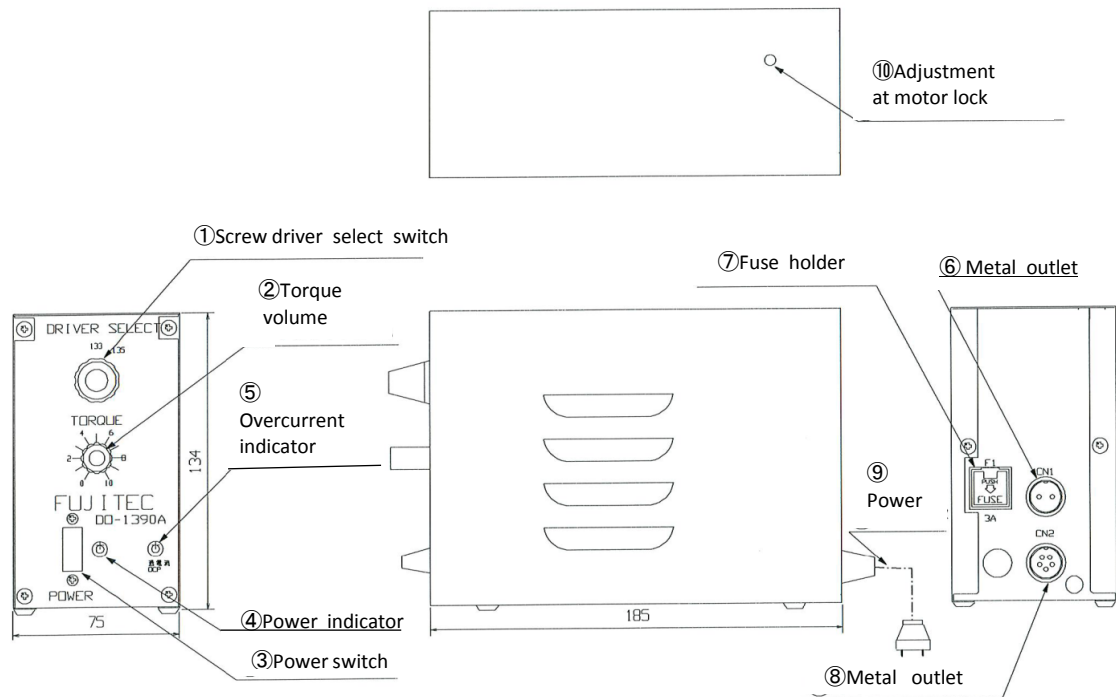
③ Holder

Please tighten one-page driver's center of the gripper with 5~8 N.m.

④ Output shaft

Transmits screwdriver rotation to bit.

2 Controller (DO-13390A) For MO-1330-1350



① Screwdriver select switch

Set to screwdriver model No.

② Torque volume

Used to change torque.

③ Power switch (POWER)

Used to ON/OFF power of control unit.

④ Power indicator

Light while power control unit is ON.

⑤ Overcurrent indicator lamp (OCP)

⑥ Metal outlet (2P)

Used to connect to screwdriver.

Panel side : PLT-162-R Harness side : PLT-162-P

⑦ Fuse holder (3A)

Used to protect and replace fuse.

⑧ Metal outlet (5P)

Connector to input/output signals.

Panel side : PLT-165-R Harness side : PLT-165-P

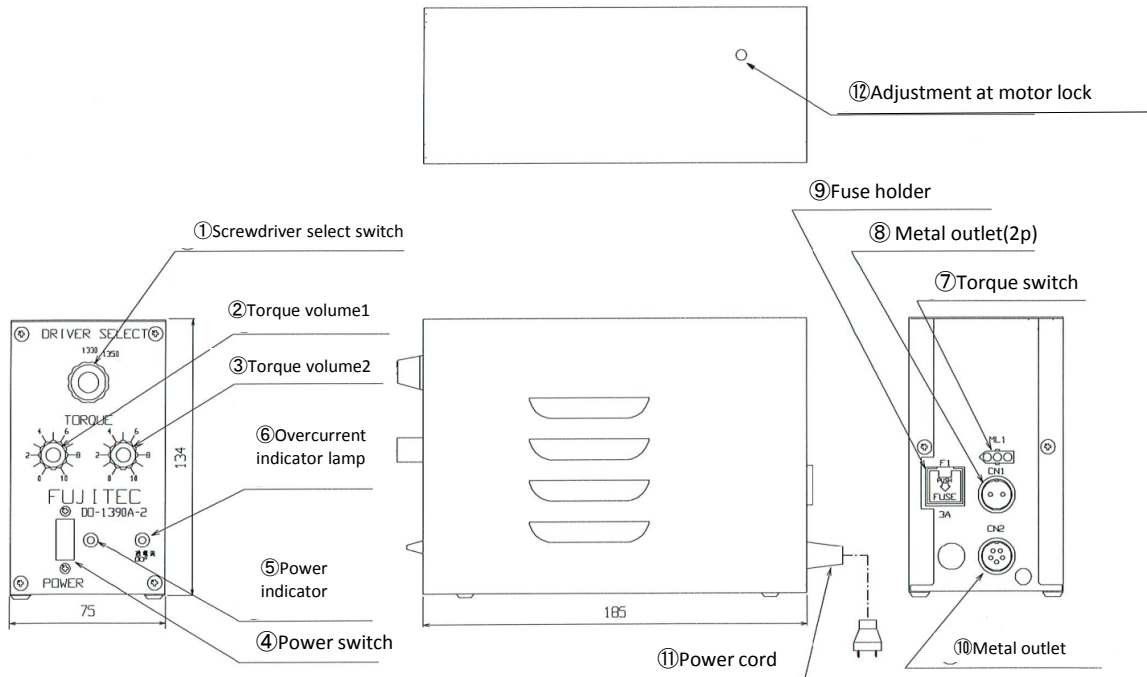
⑨ Power cord

Plugged into AC100V power source.

⑩ Adjustment at motor lock time

Can it tighten and the following maintenance officer be adjusted.

3 Controller(DO-1390A-2) For MO-1330-1350



① Screwdriver select switch

Set to screwdriver model No.

② Torque volume 1

Use to change torque.

③ Torque volume 2

Use to change torque.

④ Power switch (POWER)

Use to turn ON / OFF power of control unit.

⑤ Power indicator

Light while power of control unit is ON.

⑥ Overcurrent indicator lamp (OCP)

⑦ Torque change switch connector (3P)

Torque 1 and torque 2 can be switched.

⑧ Metal outlet (2P)

Connected to input/output signals.

Panel side : PLT-162-R Harness side : PLT-162-P

⑨ Fuse holder (3A)

Used to protect and replace fuse.

⑩ Metal outlet (5P)

Connected to input/output signals.

Panel side : PLT-165-R Harness side : PLT-165-P

⑪ Power cord

Plugged into AC100V power source.

⑫ Adjustment at motor lock time

Can it tighten and the following maintenance officer be adjusted.

4. Operation

※Be sure to perform inspection and test run before operation start.

■ Inspection before operation start check if that:

- ① Driving shaft of screwdriver unit is free from any trouble.
- ② Controller is free from any trouble.(Fusing,etc)
- ③ Each cable is free from any trouble.(Damage,crack,etc)
- ④ Each cable is connected correctly.

Please drive start of work when you can confirm the check above.

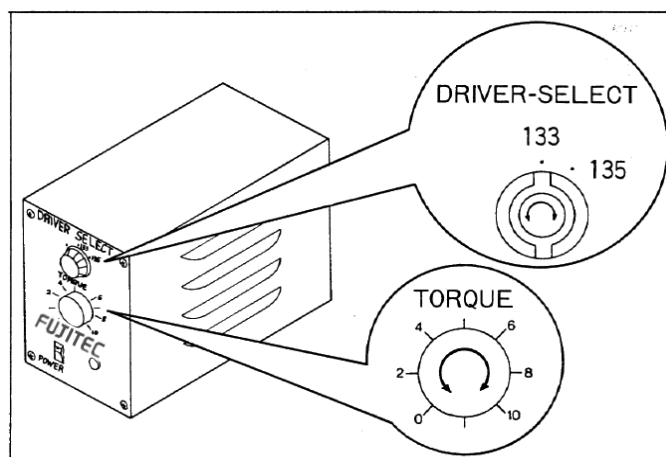
■ Trial operation

After inspection,perform trial operation to check the unit for trouble.

If any trouble should be found, be sure to repair as soon as possible.

■ Operation

- ① Set screwdriver select switch in the front of controller in accordance with model No. of electric screwdriver used.
※MO-1330→133, MO-1350→135 (DO-1390A, DO-1390A-2)
【Caution】If screwdriver's model No. does not coincide with the selected No. on the swich, screwdriver may not work or motor may be burned.
- ② Set torque knob on controller to desired fastening torque value.
(For torque value, refer to torque chart on page 7.)
- ③ Turn ON power switch on controller. Then, make sure that power indicator lights.



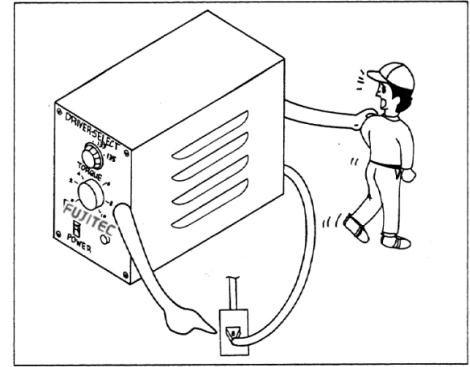
■ Stop

Turn OFF power switch on controller and make sure that power indicator goes off.

5. Maintenance

Before starting cleaning, be sure to turn OFF power switch on controller.

If the unit is to be disused for an Extended period, keep power cord unplugged.



■ Daily maintenance

Clean off dust and dirt from the unit with new cloth.

If dirt is very heavy, clean it off with cloth moistened by industrial alcohol.

■ Monthly maintenance

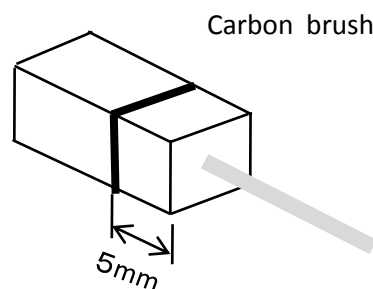
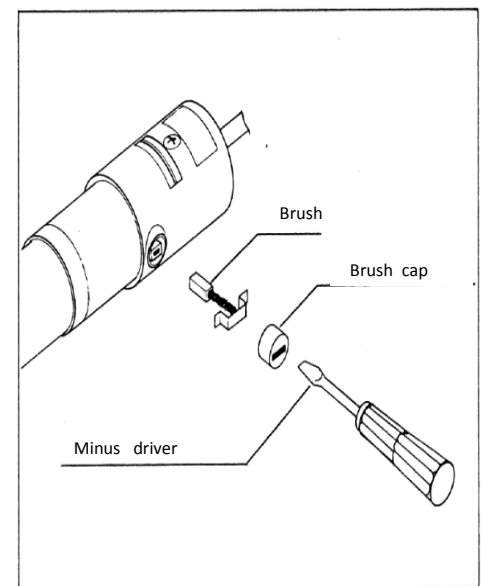
(Frequency varies depending on operation conditions.)

Brush inspection and replacement

Inspect brush periodically since brush wears out as its rotation time accumulates and replace it with new one as necessity requires.

※Do not use worn brush since this may affect motor performance and service life.

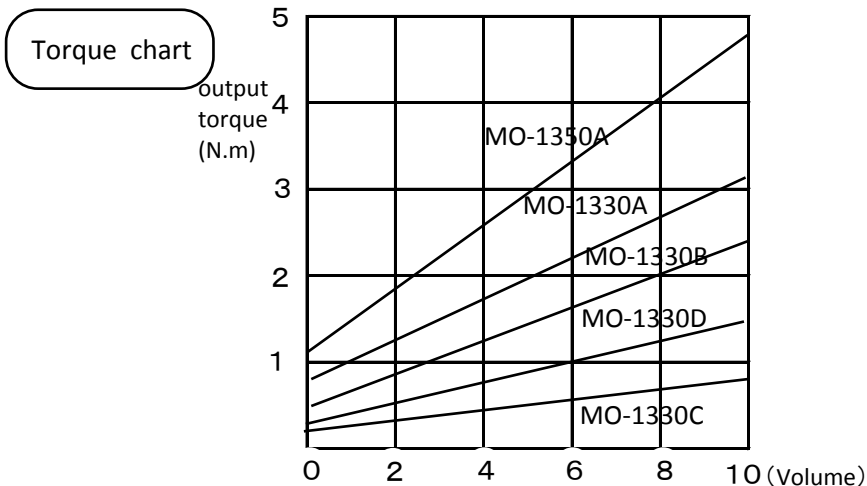
- ① Remove brush cap using minus thread driver.
- ② Wear gloves free from oil and water and pull brush out with hand.
※Touching brush with bare hands results in defective insulation.
※Be sure to remember proper orientation (top/bottom) of brush and holder position to return it to original position.
(To protect rectifier)
- ③ Replace brush before its length becomes 5mm or less.



■ Adjustment

① Torque volume knob adjustment

Set torque volume knob to the desired fastening torque. For the relation between torque volume knob calibration, fastening torque, and rotational speed of driving shaft, refer to torque chart shown below:



Product No.		Output torque (N·m)	No-load rotational speed
MO-1330	A※	0.73~3.20	130~450
	B※	0.48~2.33	170~640
	C※	0.16~0.90	590~2050
	D※	0.27~1.55	280~1060
MO-1350	A	1.19~4.80	130~450

【Note】 ※ When X character attaches to the part, the output axis become ϕ 6h8.

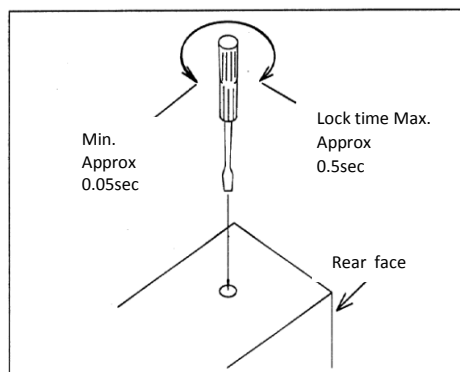
Values presented in torque charts and tables are theoretical ones. Therefore, they are different from values used for actual screw fastening on workpiece.

Fastening torque varies depending on screw size, type, fastening depth, workpiece material, etc. To obtain the most appropriate torque take various condition into consideration. Output torque means stall torque provided through electrical energy of motor, so it is different from dynamic torque applied to actual fastening. Regard it as static torque and make a distinction between static torque and dynamic torque. For related information, page 12-14.

② Adjustment of motor lock time

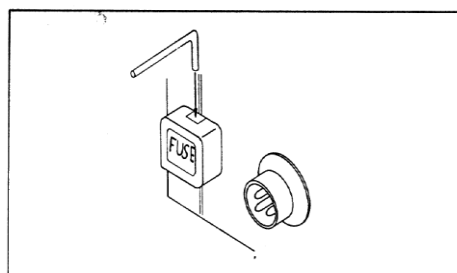
※After fastening screw with a determined torque, keep motor torque at the same level for certain time (lock time). Adjust lock time by inserting minus thread screwdriver into adjust bolt hole on the top face of controller and turning it to right or left.

※If workpiece contains cushion material such as rubber packings, make lock time longer for better fastening.



【Note】

If lock time is kept long, keep motor surface temperature at 60°C or less.

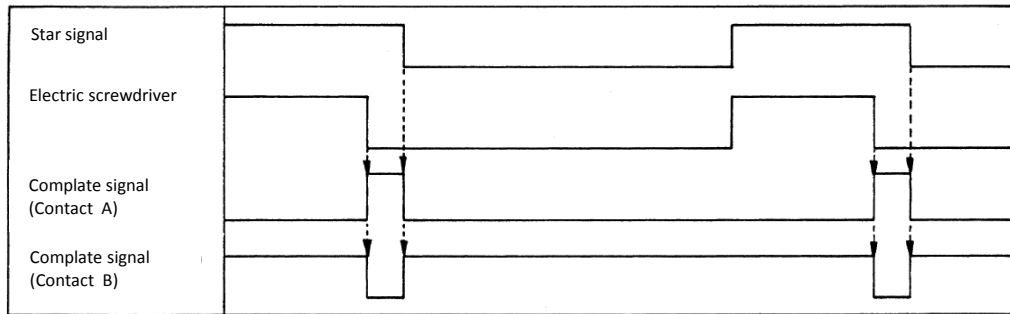


■ Consumable parts replacement

Fuse replacement

To remove fuse, insert pin into hole on the top of fuse holder on the rear panel of controller. If fuse is blown, replace it with new one.

6. Motion Timing Chart

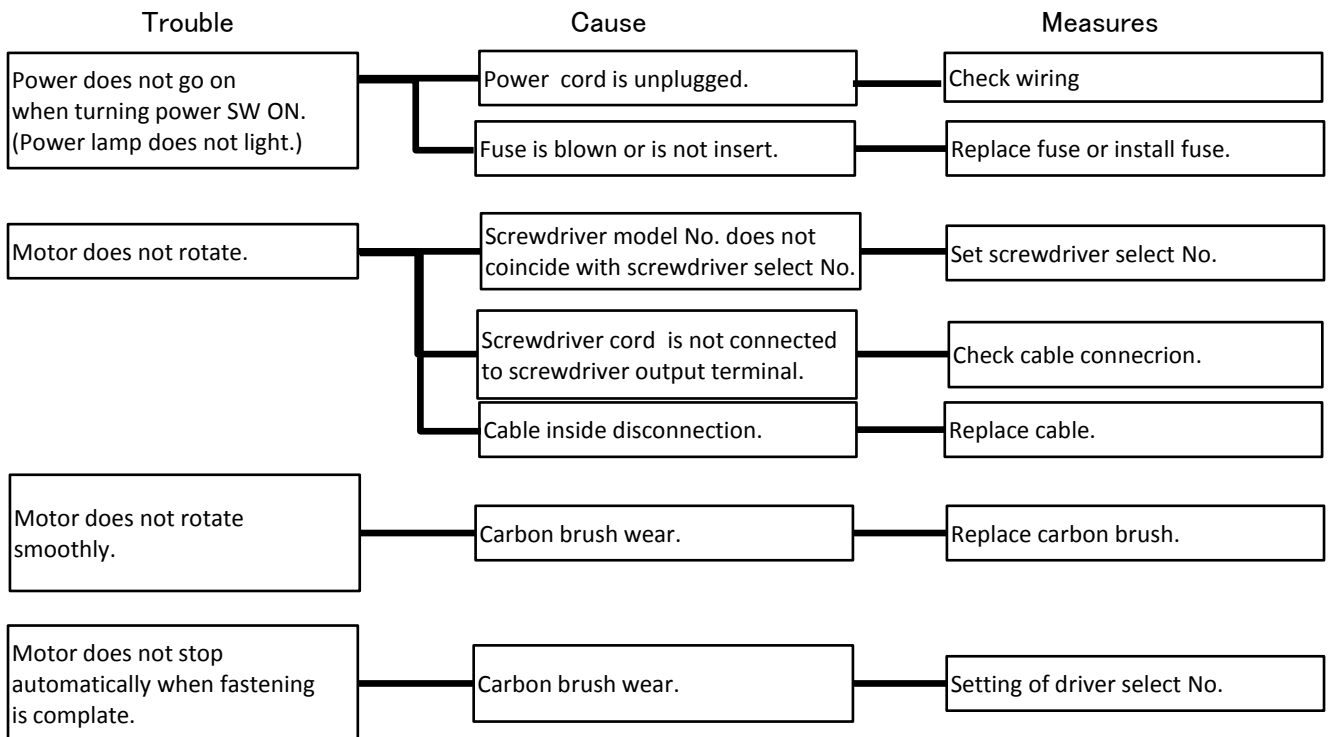


7. Troubleshooting

※If any trouble should occur, perform the following troubleshooting.

If the troubleshooting below cannot solve the problem, please consult with your dealer.

Imperfect repair not only may affect machine performance but also may result in dangerous accidents.



8. Specifications

Screwdriver unit

※MO-1330, MO-1350

Item	Specification					
	MO-1330				MO-1350	
Model No.	A	B	C	D	A	
Fastening torque (N·m)	0.73~3.20	0.48~2.33	0.16~0.90	0.27~1.55	1.19~4.80	
No-load rotational speed (r·p·m)	130~450	170~640	590~2050	280~1060	130~450	
Applicable	Machine screw	M3~M5	M3~M4	M1.4~M2.5	M2.5~M3	M4~M5
	Tapping screw	3~4	2.5~4	2~3	2.3~3	3.3~4.5
Weight (g)	750				750	
Lenght (mm)	195 (including output shaft)					
Rated input	DC23~76V					

Controllers

※DO-1390A, DO-1390A-2 (For MO-1330, 1350)

Rated input	Rated output	Weight	External dimensions	Ambient temperature
AC100V 50/60Hz	DC23~76V	1,000g	D L H 75 × 185 × 134mm	0°C~40°C

【Note】

Electric screwdrivers mentioned in this manual employs a fastening control system which utilizes lock torque obtained when motor is bound. Thus, applying over-rating load to motor may damage motor.

Fastening load will decided depending on screw size , preparatory hole on workpiece, fastening torque, fastening tact time, etc. For fastening tact time , the unit usually requires interval of approx. 3 sec for one-second fastening.

If fastening conditions are decided by user, please be careful to keep surface temperature of screwdriver at 60°C or less (in case of room temperature of 20°C) , taking heat emission of motor into consideration.

【Note】

Overcurrent indicator lamp (OCP)

When an overcurrent lamp turned on by the trouble of the motor. the disconnection of the driver cable. off does a main switch and can continue it if I do ON 3 sec later.

9. DO-1390A 1-phase , 2- phase Torque-changing Controller

1 Adjustment for Torque (DO-1390A-2)

For 2 types of torque , output (of screwdriver) to torque volume (of DO-1390A-2) are as follows:

(Ex Fastening with 2 types of torque)

No.	Patterns of fastening	Torque	Aptitudes of screw and workpiece						Aptitudes and Notes of fastening
			screws	Machine	Iron tapping screws	Plastic tapping board	aluminum board	wood screw	
1		$T1 < T2$	○						*Reduce inertial energy of motor to fastening torque. *Needs fastening tact.
2		$T1 > T2$ t: Timer			○				*Strong start fastening torque and weak final fastening torque. *Needs height detection and timer.
3		$T1 > T2$			○	○	○	○	*Strong start fastening torque and weak final fastening torque *Reduce fastening tact.

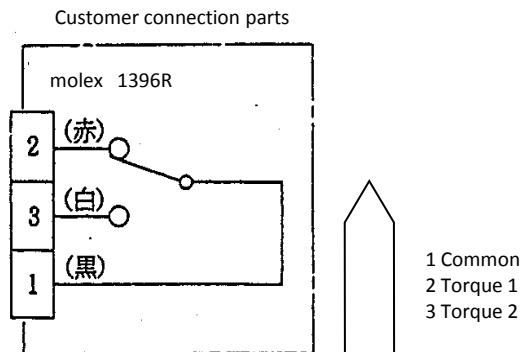
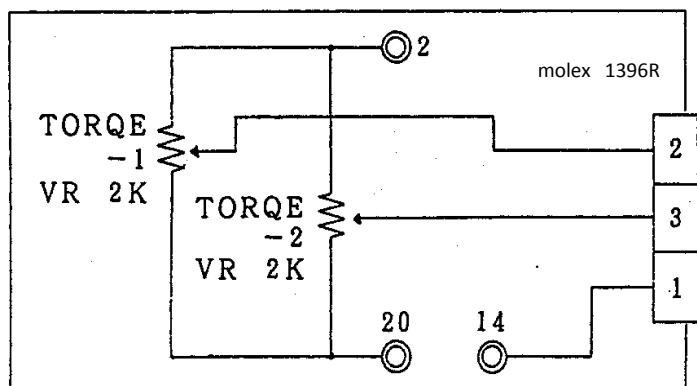
2 Changing Torque Wiring Diagram

If 2 types of torque is used, change torque by metal by metal outlet(3P) in the rear face of DO-1390A-2. Wiring is as follows:

※Please avoid doing to make common when many use the numbe (connector NO.1 common.)

※Wiring is shown in the figure below.

DO-1390A-2 Contorol Box

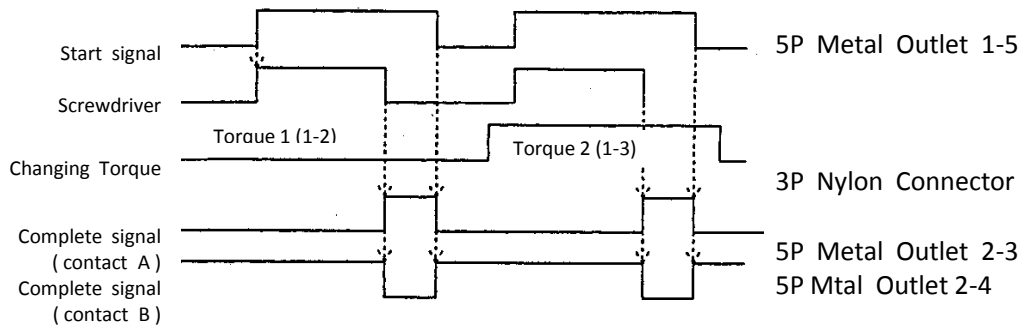


Please input Torque 1 and Torque 2 by yourself.

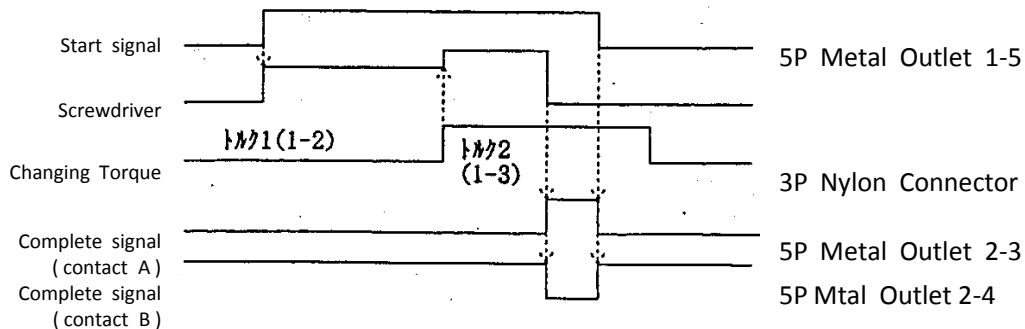
(Ex . Height, Timer etc)

3 Motion Timing Chart

① Changing torque after the output of fastening complete signal.



② Changing torque while screwdriver is rotating



4 Note

Torque changing input terminal (3P Nylon Connector) should be used as "Common" and "2" or "3" should be connect as "Torque 1" or "Torque 2" without fail. Please input the start signal of the screwdriver after the connection.

Without connection with 2 or 3, input of start signal may damage motor.

10. Service

① Requesting repair service

Before requesting repair service, check the unit again in accordance with "Troubleshooting" on page 8. If the trouble can not be solved with measures given on page 8, please consult with your dealer.

② After sales service

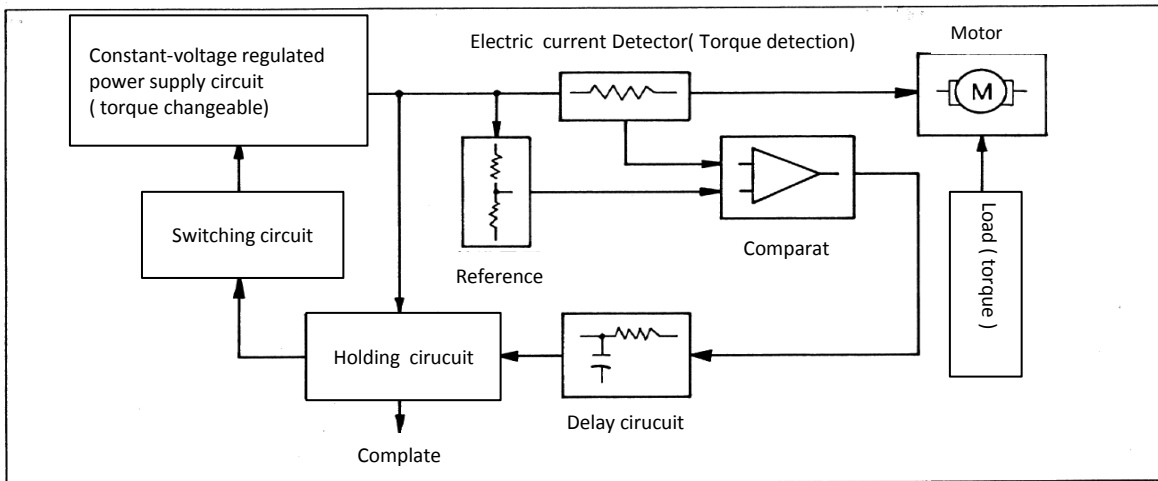
If you have any questions, please make inquiries to your dealer.

Please inquire an uncertain point of the shop.

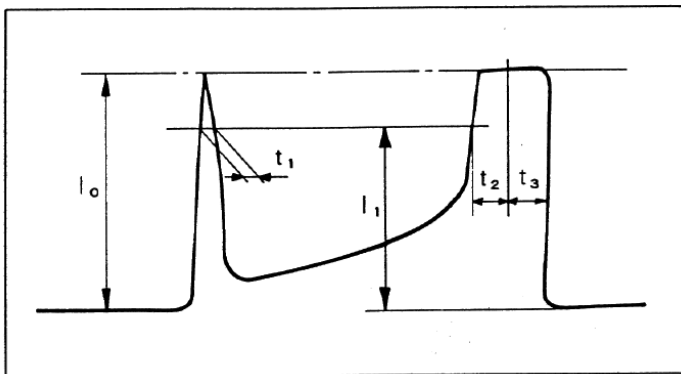
11. Appendix

■ Movement Principle of Electric Screwdriver Controller (DO-1390A)

①Block chart



②Electric current waveform



I_0 : Motor starting current
 I_1 : Detected current ($0.75 \cdot I_0$)
 t_1 : Current delay time in I_1
 (50ms as follows)
 t_2 : Delay time ($t_2 > t_1$)
 $t_2 + t_3$: Holding time (0.05~)

③Movement principle

Load current value of motor goes up as screw is fastened. Controller compares this value with the preset one, and when the two values coincide, controller stops motors a determined time later.

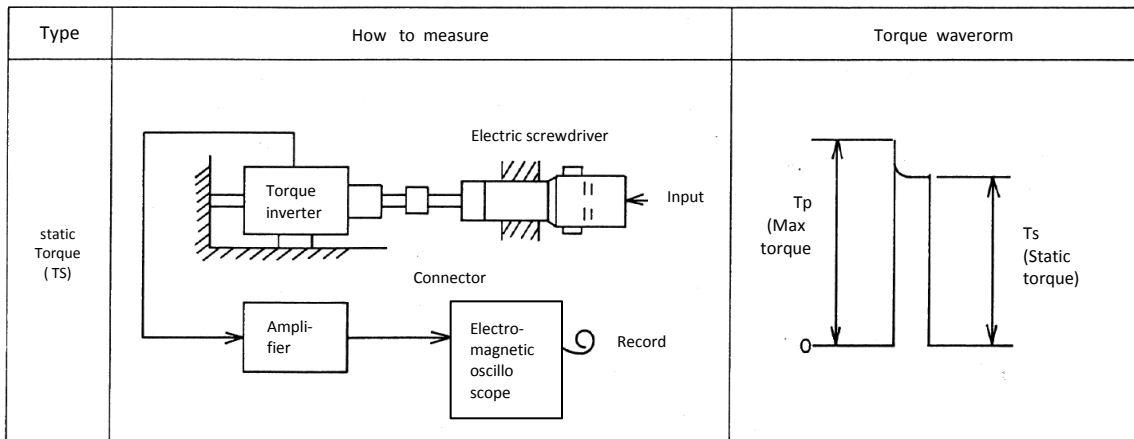
④Reference

- Load current is proportionate to fastening torque since DC motor is used.
- Not to stop motor with starting current, the following condition is adopted. $t_1 < t_2$
- Current detection level for I_1 is set to 75% of I_0 .

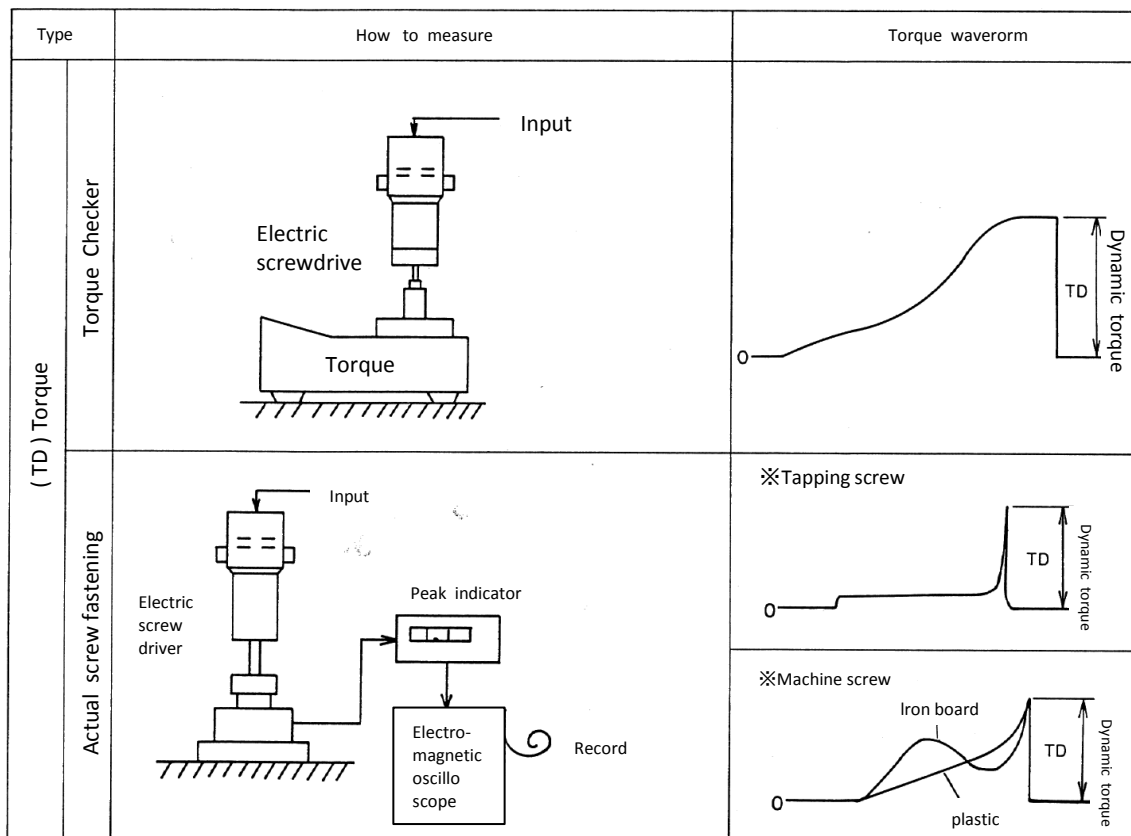
■ Electric screwdriver torque measurement.

① Definition of dynamic / static torque

※Static torque (Theoretical torque) : means torque generated through motor's electrical energy (Stall torque of motor)



※Dynamic torque (Fastening torque) : means torque generated at screw fastening.
(Stall torque of motor plus torque generated by inertial energy of motor rotor)



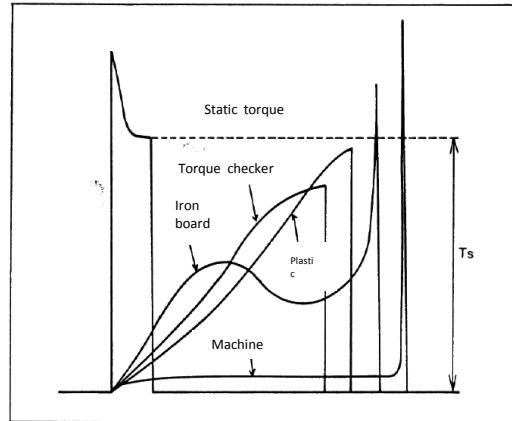
■ Theory of electric screwdriver torque

① Relation between dynamic torque and static torque.

Torque generated by screwdriver varies depending on screw types (iron tapping, plastic tapping, machine screw) and torque measurement methods as shown in the chart on the right.

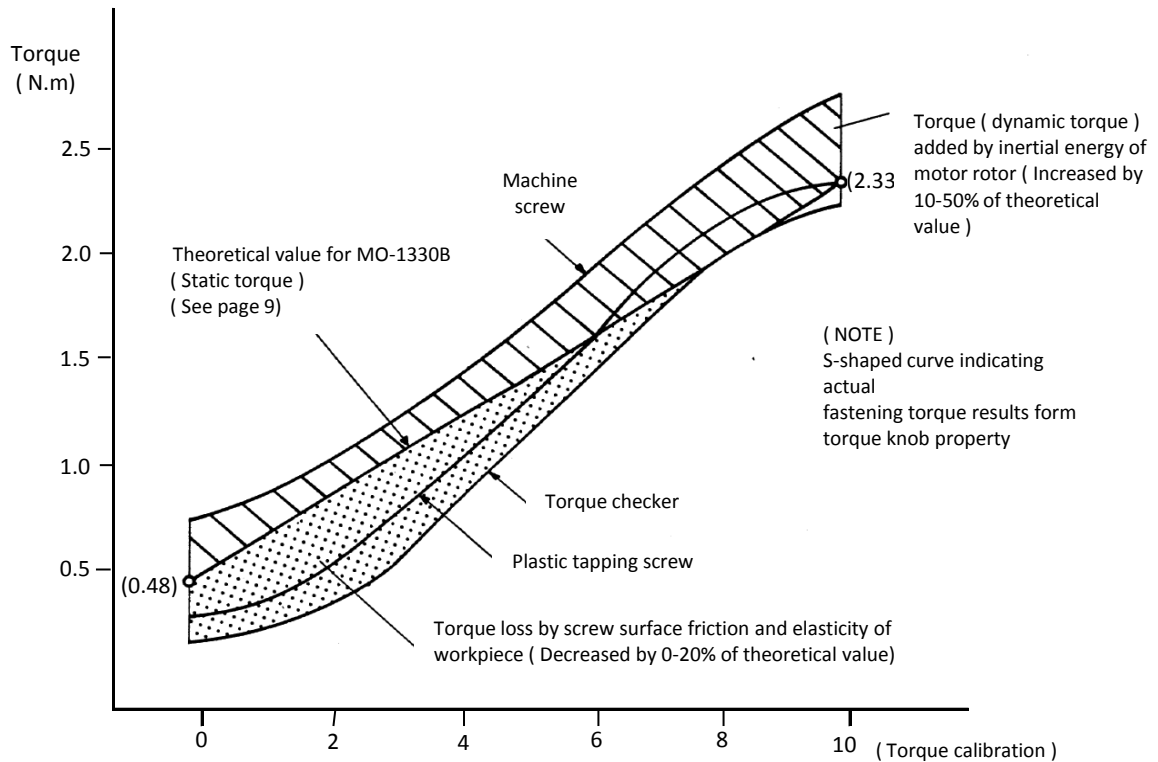
The relationship between these torque values is not fixed, but the following formula is usually Applied:

Torque checker value \cong Plastic tapping
 \cong static torque (TS) \cong Iron tapping
 $<$ Machine screw



② Relation between theoretical value (static torque) and actual fastening torque (dynamic torque)

(Ex: MO-1330B)



Item No.	
Dated purchased	年 月 日
Dealer	TEL:

FUJITEC

FUJITEC CO., LTD

1-10-6 Ryoke, Nakaku, Hamamatsu-city

Shizuoka-ken 430-0852, JAPAN

TEL : 053-462-3636

FAX : 053-462-1818